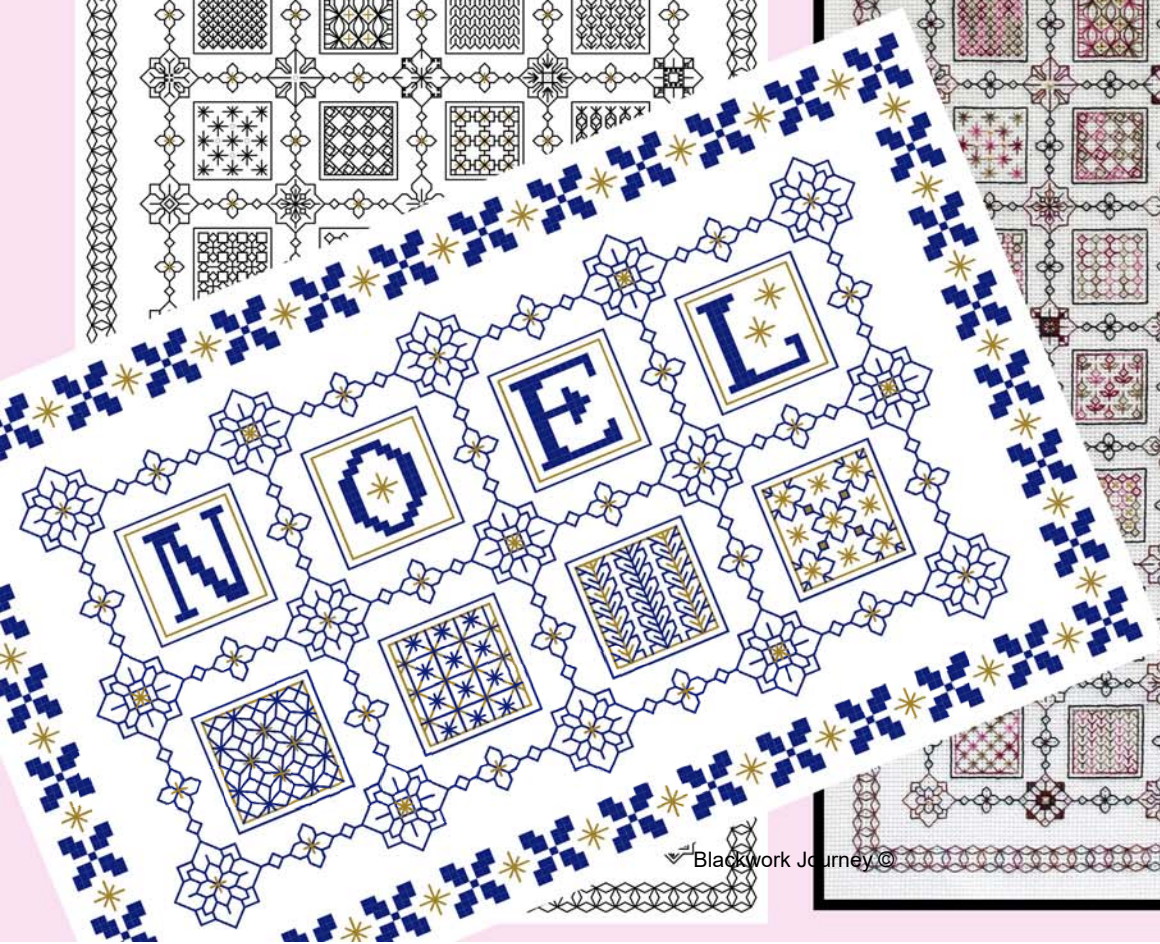
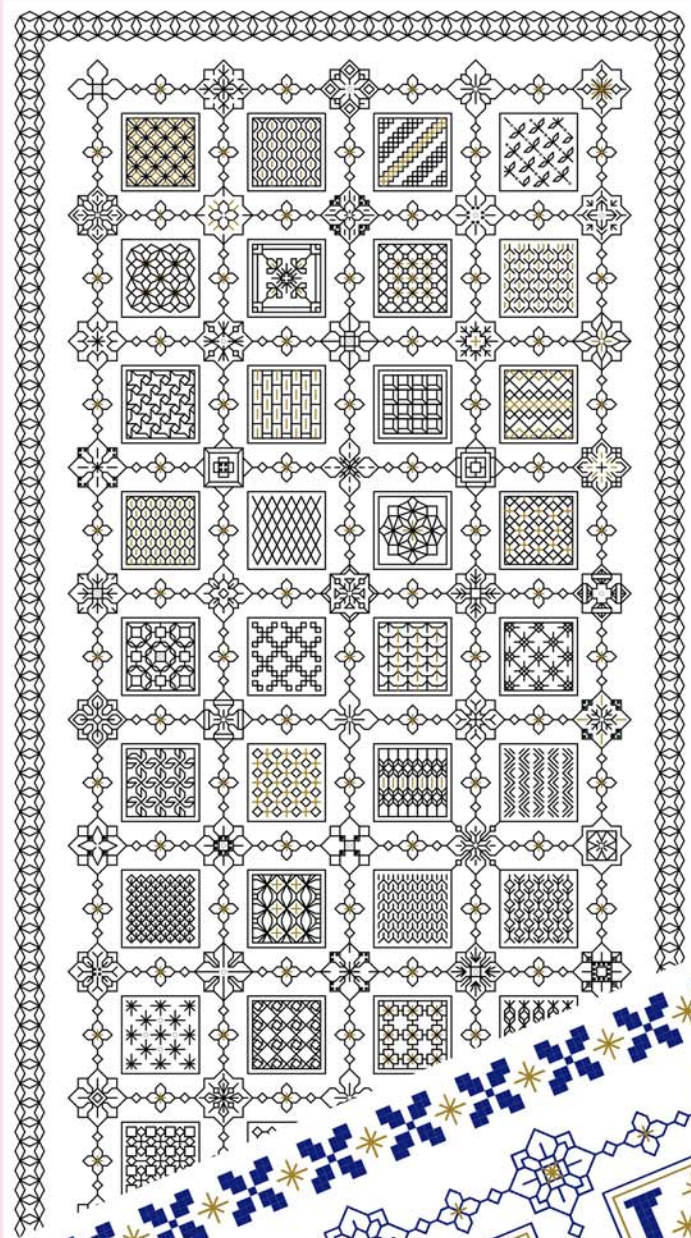
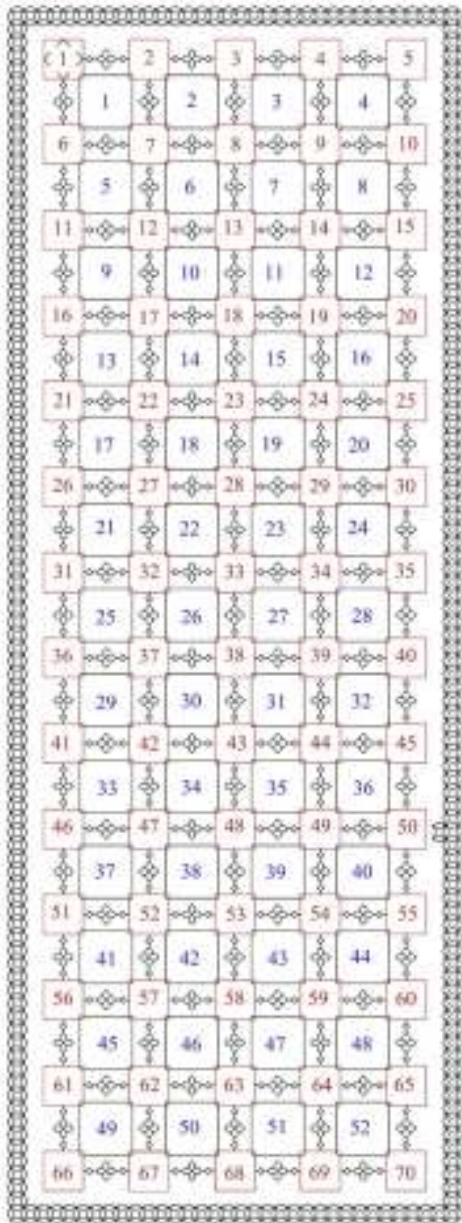


'TINY TREASURES'

Rectangle - Part 3





Tiny Treasures Rectangle Design Part 3 – Colour and Black and Gold

Rectangular design suitable for framing or a runner. This design is less complicated than the square design.

Design area: 9.86 x 26.43 inches
Stitches: 138 x 370

Material:

Zweigart 28 count evenweave or 14 count Aida,
15 x 33 inches

25 count Lugana Material size: 17 x 35 inches

70 Flower motifs

52 Pattern blocks

1 border and 120 mini links

Total: 243 Tiny Treasures

Part 3 is underneath Part 1

Threads: Information about the threads required in on the Keys attached to the back of Part 1 and also in FR0159 Introduction.

Numbered rectangular layout

Stitches used:

Back stitch, one strand of floss

Cross stitch two strands of floss

Evenweave: stitches are worked over 2 threads unless the pattern indicates otherwise.

Cross stitch: stitches are worked over one block unless the pattern indicates otherwise.

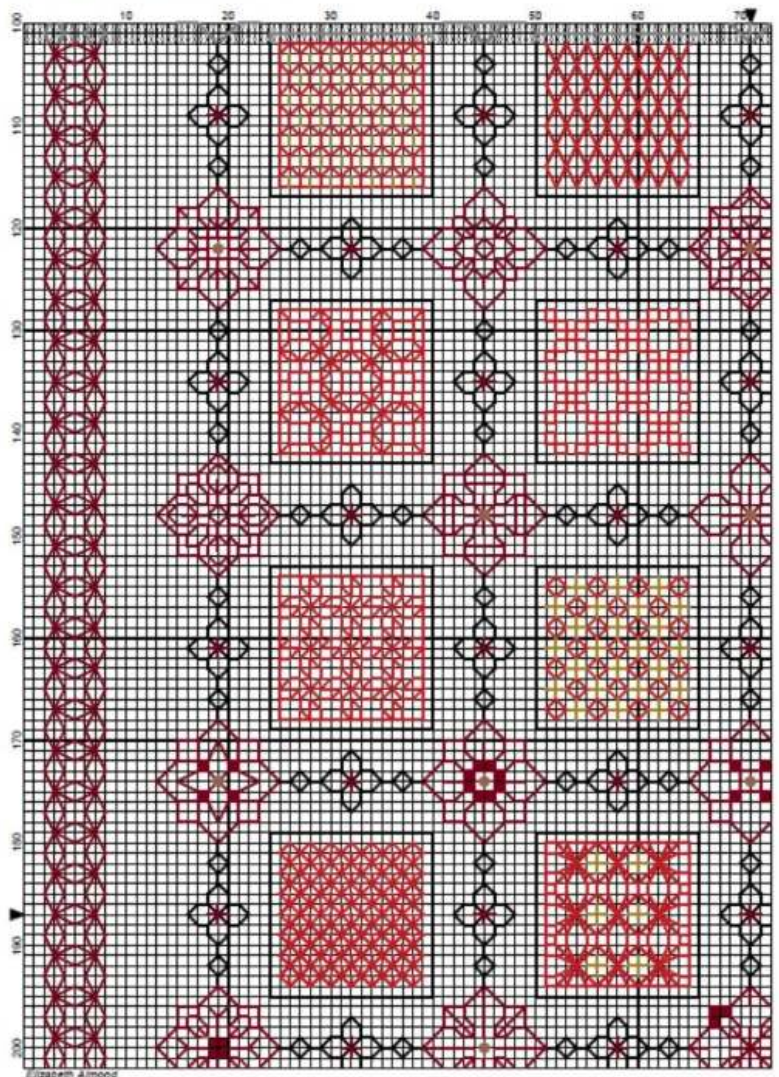
Work Rectangular Design as follows:

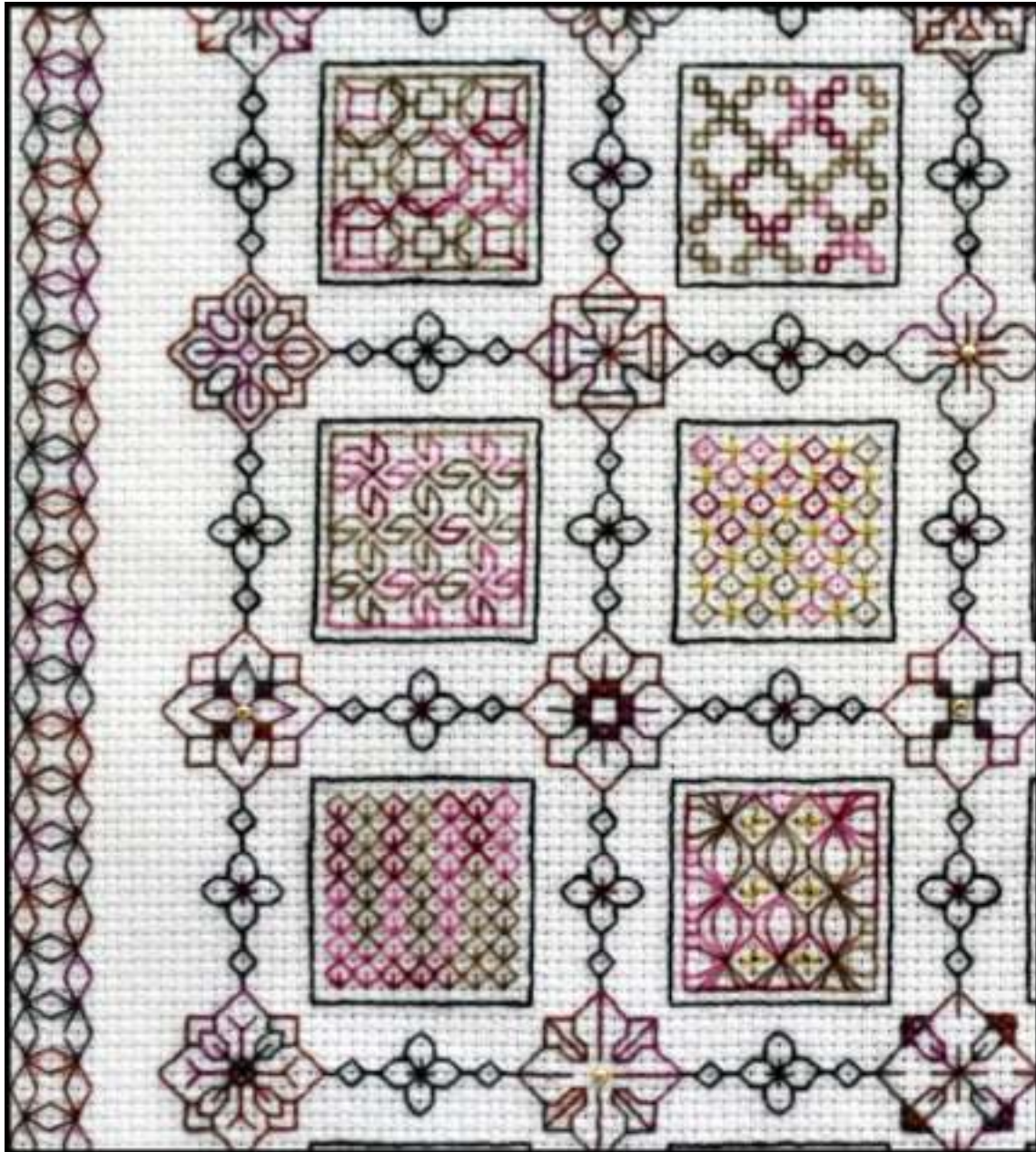
Complete any unfinished blocks from Part 1.

Continue the border using one strand of floss.

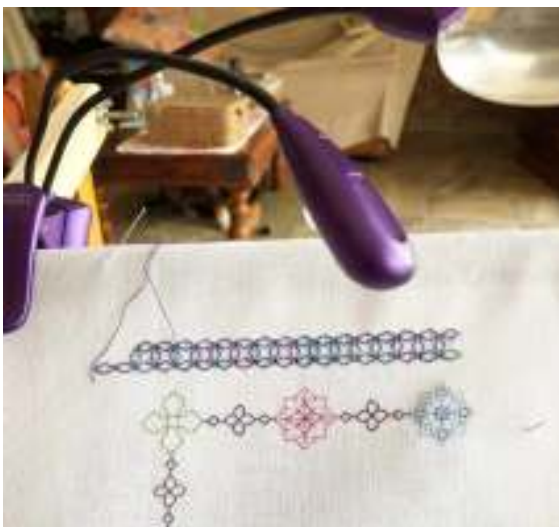
Add beads after the whole embroidery has been completed.

Tiny Treasures Rectangular Colour Panel





Extract from Part 3 Rectangle worked in DMC Coloris on 14 count Aida



Good practise:

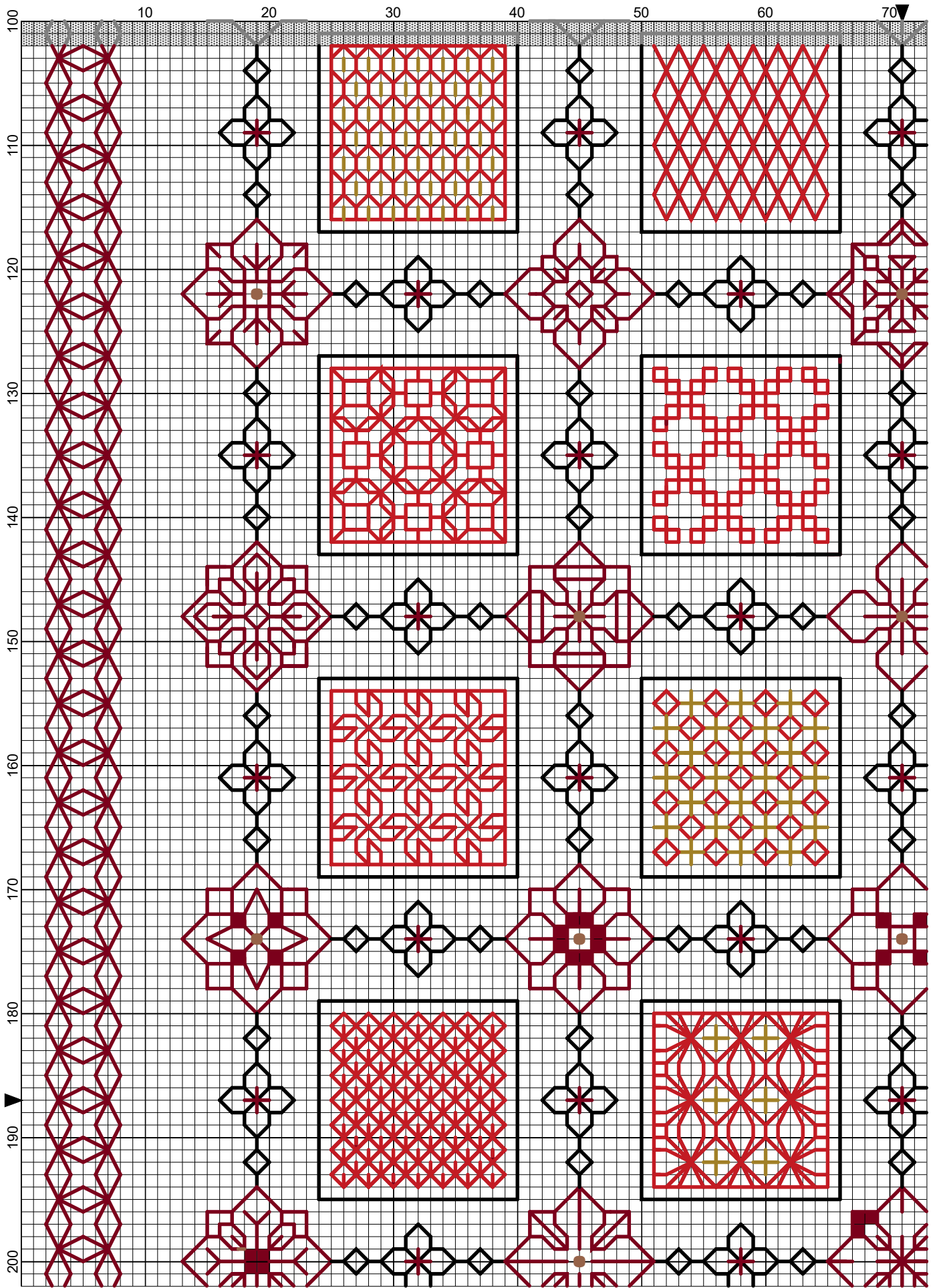
Barbara is using a simple clip on light and lens attached to her frame to work her embroidery.

Sit on a comfortable chair, use good lighting, the correct count of fabric and the right size needle to make life much easier.

I hope you enjoy Part 3. If you have any queries please contact:

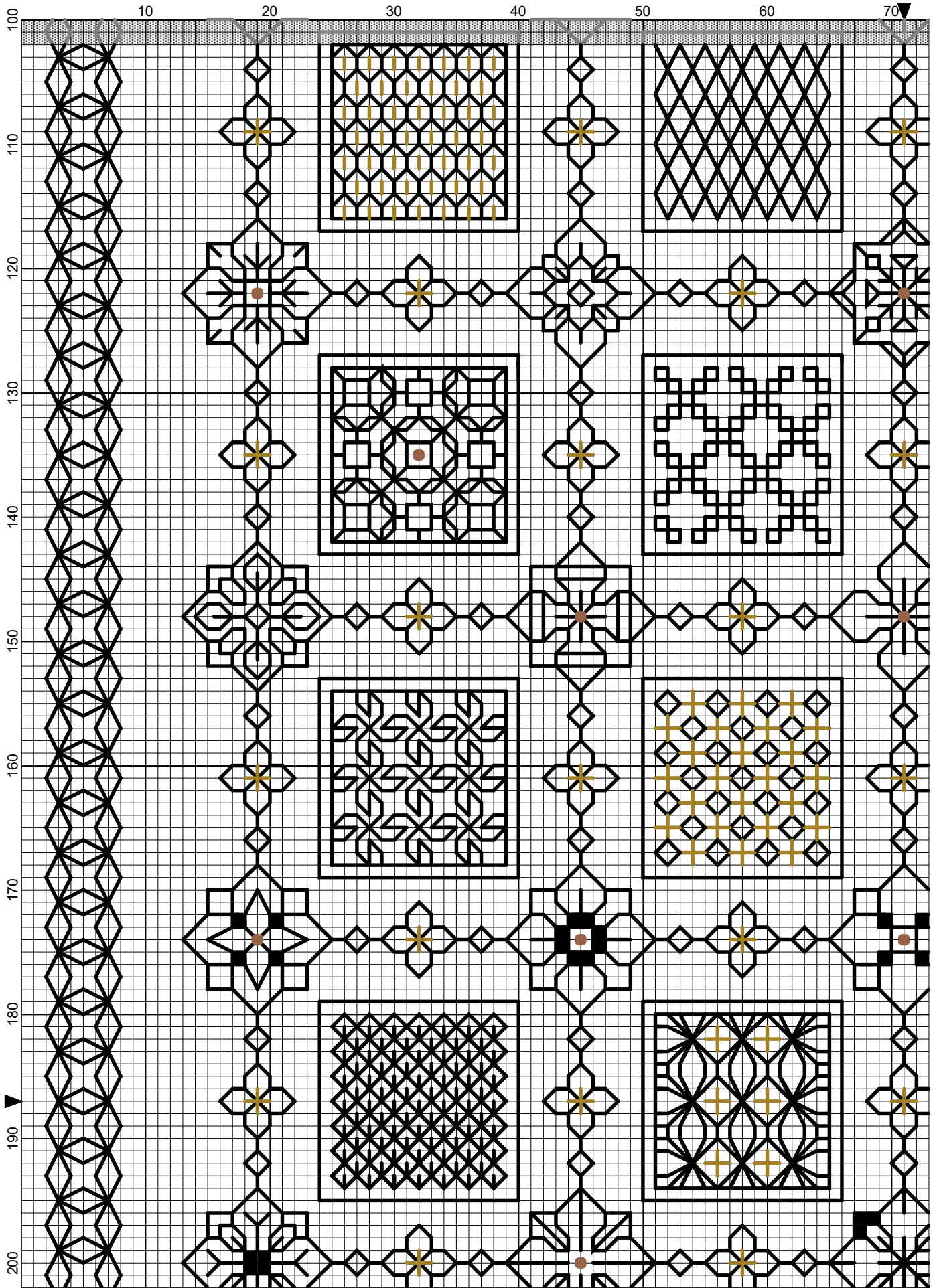
lizalmond@blackworkjourney.co.uk

Tiny Treasures Rectangular Colour Panel



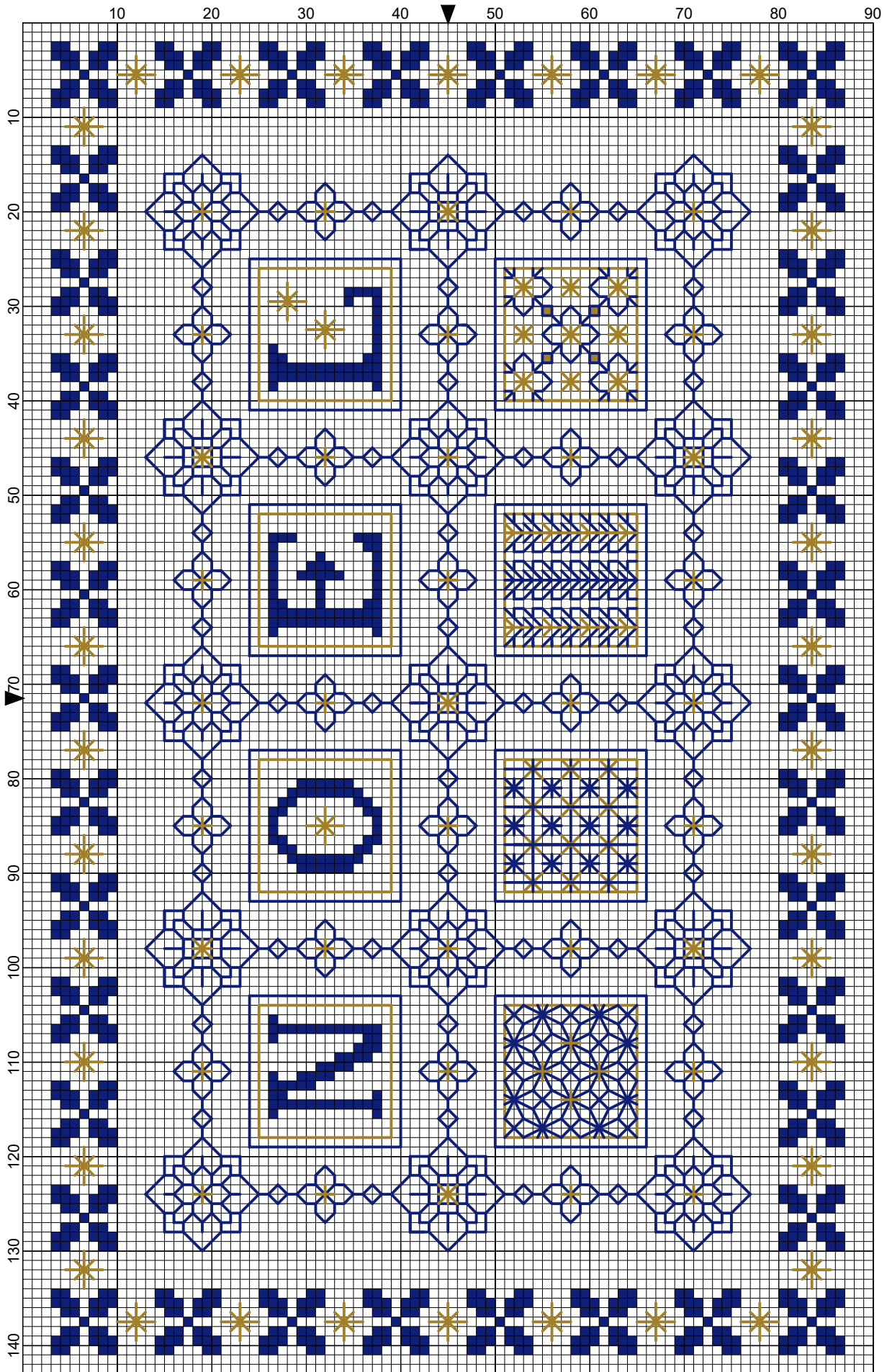
Elizabeth Almond

Tiny Treasures Rectangular Black Panel



Elizabeth Almond

Blue and Gold Christmas Sampler



Elizabeth Almond

Blue and Gold Christmas Sampler

Author: Elizabeth Almond
Copyright: Elizabeth Almond
Grid Size: 90W x 143H
Design Area: 6.00" x 9.93" (84 x 139 stitches)

Legend:

■ [2] DMC-796 ANC-134 DLE- royal blue - dk

Call Outs:

■ [2] DLE-E3852 Dark Gold DMC Light Effects

Backstitch Lines:

— DMC-796 royal blue - dk — DLE-E3852 Dark Gold

Blue and Gold Christmas Sampler

Extend the Christmas sampler, alter the arrangement and colours to include all the patterns and letters.

Material:

Zweigart 28 count evenweave or 14 count Aida 10 x 13 inches

Tapestry needle No 24

Small embroidery ring

Stitches used:

Back stitch, one strand

Cross stitch, two strands

Eyelet stitch, one strand

Method:

Edge the fabric to prevent fraying. Fold the fabric into four quarters to find the centre point. Mount the embroidery in the ring so that the fabric is 'drum' tight.

1. Work the central motif first.

2. Work the letters or fillers in turn using the colours selected. Work the holly border in two strands of floss.

3. Place the finished embroidery face down on a soft towel and press lightly.

Small cushion:

Place the two pieces back to back with the embroidery inside. Machine stitch around the edge leaving a small opening to insert a small cushion pad. Slip stitch closed. Add cord edging (optional)

I hope you enjoy working this design as much as I have enjoyed creating it.

If you have any queries please contact:

lizalmond@blackworkjourney.co.uk